

# Meguro City

FY2022 Edition

## How to Separate and Dispose of Waste Items and Recyclables



Waste reduction character  
Gomires

Please take all waste items and recyclables out to the designated collection site.  
Check your collection day with the collection day schedule list and put it in the blank.

### Recyclables

Once a week

Tue.

Day of the week

Sort recyclable items into the appropriate categories and set them out at the collection site before 8:00 am.

#### ① Plastic containers and packages



As indicated by this sign.

Rinse soiled items lightly with water before disposal.

Place items in a transparent bag for visibility.  
※Do not double or triple layer the bags.



Items with unremovable stains ⇒ Dispose as combustible wastes

#### ② PET bottles



Dispose caps and labels as same as plastic containers and plastic packages.



Rinse and drain off the water. Crush lengthwise.



Put them into a designated net or a transparent bag.



#### ③ Bottles for beverage and food



Remove metal caps and dispose of them as non-combustible wastes.

Rinse bottles. Place items in a transparent bag or a designated bin.



#### ④ Cans for beverage and food



Rinse bottles. Place items in a transparent bag or a designated bin.



Items with unremovable stains ⇒ Dispose as combustible wastes

### Combustible

Twice a week

Wed.

Day of the week

Sat.

Day of the week

#### Kitchen garbage

Drain the water completely.



Plastic bottles, containers or packages with unremovable stains



#### Plastic products



Leather products and rubber products

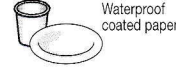


Plastic or wooden hangers

#### Clothes and fabric



Paper unable to be collected as used paper



#### Twigs and dead leaves



Cut twigs into 50cm long or less and bundle them in 30cm in diameter or less.

Place combustible wastes into either a garbage can with a lid or a transparent bag.

### Non-combustible

Twice a month

Week of the month  
2・4

Thu.

#### Products containing mercury

Once a month

Week of the month  
2

Thu.

Dispose of items no later than 8:00 a.m.

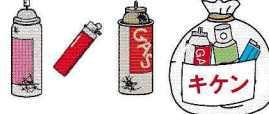
Glass, broken bottles, ceramics, etc.



#### Metal



#### Spray cans, lighters, gas cartridge bottles



Use the contents up completely, place the item(s) in a separate bag, and write "キケン" (Dangerous) on the bag before disposal.

Caution !!

Place combustible wastes into either a garbage can with a lid or a transparent bag.

Tube-shaped and bulb-shaped fluorescent lights



Place it in replacement packaging or write "Keikoukan" (fluorescent tube) on the garbage bag.

Mercury thermometers



Mercury blood pressure manometer



Write "Suigin" on the transparent bag before disposal.

Small home appliances  
(A longest side is smaller than 30cm)



Take the nine designated small home appliances to the collection box at city facilities.  
→P6

### Used paper

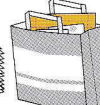
Once a week

Tue.

Dispose of items no later than 8:00 a.m.

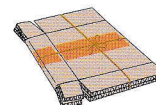
Group Collection

#### Newspapers, Miscellaneous, Cardboard boxes



Bundle items in each category and tie them up with strings.

※Remove parts other than paper (tape, film, metal, etc.).



Used paper from households are collected by your town council or residents' association.  
Check your collection day on the signboard at your waste collection site.

\* Used papers generated from business activities cannot be disposed through the group collection.

Please take out your large-sized waste to the location instructed at the time of application.

### Large-sized waste

Paid service, application required

Dispose of items no later than 8:00 a.m.

In general, any item measuring at least 30 cm on any side

Meguro City Large-Sized Waste Acceptance Center

03-5715-0053

Internet application: available 24/7 Please use multilingual translation function.

Meguro City website: "オンラインサービス" (Online service), "粗大ごみ処理の手続き" (Procedures of oversized garbage processing)

Inquiries: ●Meguro Waste Collection Office (Collection and Transportation, and Others) ☎03-3719-5345  
●Waste Management & Recycling Section (Planning and Promotion, and Others) ☎03-5722-9572

# Recyclables

Once a week

- Remove stains from recyclables and classify them into each category.
- Be sure to place recyclables at the collection site **before 8:00 am** on the designated collection day.
- Collection time and collection vehicles differ depending on types of items.

## ① Plastic containers and packages

Wraps, containers and bags made from plastic that were initially used for purchased merchandise but became unnecessary after their contents were removed.



### Packages

Containers for eggs, natto (fermented soy beans), miso, fruits, etc. and takeout bento boxes, etc.



### Cups

Containers for cup noodles, yogurts, puddings, jellios, etc.



### Trays

Trays for meats, fish, vegetables, etc.



### Bottles

Containers for shampoos, conditioners, dish soaps, etc.



### How to dispose



- 1 Remove all contents
  - 2 Rinse to remove stains and drain the water
  - 3 Place items in a transparent bag
- ※ If paper price tags or paper labels cannot be removed, dispose of them as is.  
※ Do not double or triple-layer the bags.

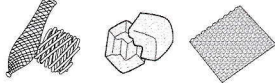
### Bags

Plastic bags, and bags for snacks, bread, refillable products, etc.



### Packing materials and Styrofoam

Nets for fruits and vegetables, styrofoam for electric appliances, bubble-wrap, etc.



### Other containers and packages

Labels, caps, lids, packaging-films, candy-wrappers, bread clips, packs of pills, etc.



### ✗ Items not acceptable

- Items with unremovable stains



## ② PET bottles

for softdrinks, alcoholic beverages, soy sauce, etc.

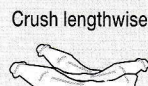
### How to dispose

- 1 Remove and dispose of caps and labels



(⇒as recyclables ① plastic containers and packages)

- 2 Rinse and drain off the water.

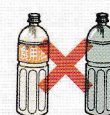


- 3 Put them into a designated net or a transparent bag.



### ✗ Items not acceptable

- Contents were oil products.
- Items had any un-removable stains
- Colored bottles



## ③ Bottles

for beverage and food

### How to dispose

- 1 Remove caps



- 2 Rinse and drain off the water.



- 3 Put them into the designated bin (yellow) or a transparent bag.



※ Colored bottles are also collected.

※ Dispose metal caps as non-combustible wastes



## ④ Cans (aluminum cans and steel cans)

for beverages and foods

### How to dispose

- 1 Rinse and drain off the water.



- 2 Put them into the designated bin (blue) or a transparent bag.



※ Loosely tighten the cap when disposing of bottles.



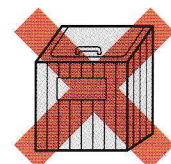
### ✗ Items not acceptable

- Stains or oil are unremovable.
- Broken bottles, glass sheets or glass cups
- Bottles for cosmetics and chemicals
- Cosmetic bottles
- Bottles for chemicals
- ※ Medicine bottles are collected.
- Spray cans



⇒ Dispose as non-combustible wastes

Set PET bottles, glass bottles and cans outside of the garbage container instead of placing them inside.



# Combustible waste

Twice a week

## Kitchen garbage



Squeeze out water from kitchen garbage.

## Cooking oil



Soak cooking oil in used paper or old fabric, or solidify it with a coagulator.

## Clothes and fabric



## Twigs and dead leaves



Cut twigs into 50cm long or less and bundle them in 30cm in diameter or less. Up to four bundles are collectable at one time.

## Leather products and rubber products



If small metal parts such as clasps cannot be removed, dispose of them as is.

## Plastic products other than containers or packages

(no ♻️ sign attached)

CDs, video tapes, stationeries, household goods, toys, plastic or wooden hangers, etc.



※ You can dispose items containing a little metal part as combustible wastes.

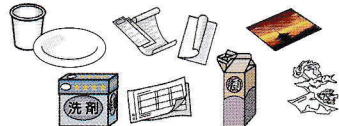
## Plastic bottles, containers or packages with unremovable stains



Plastic items with this sign: ♻️

## Paper unable to be collected as used paper

Paper cups, receipts, photos, pressure bonded postcards, paper scraps, tissue papers, detergent boxes, courier service labels, paper lined with aluminum (sake cartons, etc), etc



## Others

Hygiene products, blue ice gel, etc.

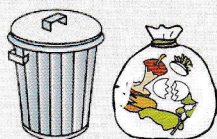


※ Flush excrements from diapers into a toilet bowl.



## How to dispose

Place combustible wastes into either a garbage can with a lid or a transparent bag.



※ Generally, dispose of any waste product 30cm wide or larger as large-sized waste.

Please take out waste items before the time designated on the signboard at the collection site.

# Non-combustible waste

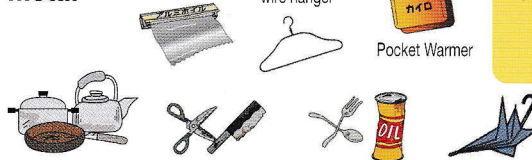
Twice a month

## Ceramics, glass

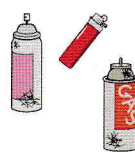


Wrap sharp or broken objects such as blades or metal sticks with paper and mark "キケン" (dangerous) on it before disposing.

## Metal



## Spray cans, lighters, gas cartridge bottles (use up contents)



CAUTION !!

If spray cans, lighters and gas cartridge bottles have remaining contents inside, it may create a fire hazard for waste collection vehicles. Follow the instructions below for disposal:

- 1 Be sure to use up contents inside.
- 2 Use a garbage bag separate from other non-combustible wastes.
- 3 Mark "キケン" (dangerous) on the garbage bag.

※ You do not need to puncture cans.

※ If you need to dispose spray cans with contents inside, be sure to consult with Meguro Waste Collection Office.

## Small home appliances

(A longest side is smaller than 30cm)

(Items measuring 30cm or longer on any side are considered large-sized waste.)



※ Rice cookers that capacity is 1 liter or larger are considered as large-sized waste.

## How to dispose

Place non-combustible wastes into either a garbage can with a lid or a transparent bag.



※ Generally, dispose of any waste 30cm wide or larger as large-sized waste.

Please take out wastes before the time designated on the signboard at the collection site.

# Used paper

(newspapers, cardboard boxes, magazines)

## Group Collection

Used paper products from around the household are collected by your town council or residents' association (group collection).

- Please place used papers at the collection site before 8:00am. (Check your collection day on the signboard at your waste collection site.)
- Used paper is collected even on rainy days.
- Place items outside of the garbage container instead of placing them inside.

## How to dispose

Bundle items in each category and tie them up with strings.

- Remove parts other than paper from waste paper and insert them between magazine pages or put them in a paper bag for disposal.

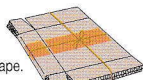
## Newspapers

※ Bundle flyers together with newspapers.



## Cardboard boxes

- ※ Fold them to flatten.
- ※ Do not bundle with adhesive tape.



## Miscellaneous

※ Magazines, books, waste paper, etc.



- ※ Remove hard covers from books and dispose them as combustible waste.
- ※ Remove parts other than paper (tape, film, metal, etc.).

# Products containing mercury

Place items outside of the garbage container instead of placing them inside.

Please take these items to the collection site before 8:00am on the designated collection day once a month.

※ Please use a separate garbage bag from one for non-combustible wastes.

## Tube-shaped and bulb-shaped fluorescent lights

Place it in replacement packaging or write "Keikoukan" (fluorescent tube) on the garbage bag.



## Other items containing mercury

Mercury thermometers, mercury blood pressure manometer, etc.

Write "Suigin" on the transparent bag before disposal.



Incandescent bulbs, LED bulbs, miniature bulbs and neon glow lamps are Non-Combustible waste.

Place them in replacement packaging or wrap in paper and dispose them.



## Recyclables and Waste Items Collection Days of the Week



Non-combustibles and products containing mercury are collected on the days marked in yellow.

Area	Recyclables	Combustibles	Non-combustibles Products containing mercury
1 to 3 Aobadai	Thu.	Tue. & Fri.	1st & 3rd Sat.
4 Aobadai	Thu.	Tue. & Fri.	1st & 3rd Sat.
1 & 2 Chuocho	Sat.	Mon. & Thu.	2nd & 4th Fri.
1 & 2 Gohongi	Mon.	Tue. & Fri.	2nd & 4th Wed.
3 Gohongi	Wed.	Mon. & Thu.	2nd & 4th Fri.
1 & 2 Haramachi	Tue.	Wed. & Sat.	2nd & 4th Thu.
1 & 2 Higashigaoka	Wed.	Mon. & Thu.	1st & 3rd Fri.
1 to 3 Higashiyama	Mon.	Tue. & Fri.	1st & 3rd Wed.
1 & 2 Himonya	Tue.	Wed. & Sat.	2nd & 4th Thu.
3 & 4 Himonya	Fri.	Wed. & Sat.	2nd & 4th Thu.
5 & 6 Himonya	Wed.	Mon. & Thu.	2nd & 4th Fri.
1 to 3 Jiyugaoka	Fri.	Wed. & Sat.	1st & 3rd Mon.
1 Kakinokizaka	Wed.	Mon. & Thu.	2nd & 4th Fri.
2 & 3 Kakinokizaka	Wed.	Mon. & Thu.	1st & 3rd Fri.
1 Kamimeguro	Thu.	Tue. & Fri.	1st & 3rd Sat.
2 Kamimeguro	Sat.	Mon. & Thu.	2nd & 4th Tue.
3 Kamimeguro	Sat.	Tue. & Fri.	2nd & 4th Wed.
4 & 5 Kamimeguro	Mon.	Tue. & Fri.	2nd & 4th Wed.
1 to 4 Komaba	Mon.	Tue. & Fri.	1st & 3rd Sat.
1 Meguro	Thu.	Tue. & Fri.	2nd & 4th Sat.
2 Meguro	Thu.	Tue. & Fri.	1st & 3rd Sat.
3 & 4 Meguro	Sat.	Mon. & Thu.	1st & 3rd Tue.
1 to 3 Megurohoncho	Tue.	Wed. & Sat.	1st & 3rd Thu.
4 to 6 Megurohoncho	Tue.	Wed. & Sat.	1st & 3rd Thu.
1 to 3 Midorigaoka	Fri.	Wed. & Sat.	1st & 3rd Mon.
1 Minami	Tue.	Wed. & Sat.	2nd & 4th Thu.
2 Minami	Fri.	Wed. & Sat.	2nd & 4th Thu.

Area	Recyclables	Combustibles	Non-combustibles Products containing mercury
3 Minami	Fri.	Wed. & Sat.	2nd & 4th Mon.
1 & 2 Mita	Thu.	Tue. & Fri.	2nd & 4th Sat.
1 & 2 Nakacho	Sat.	Mon. & Thu.	1st & 3rd Tue.
1 & 2 Nakameguro	Thu.	Tue. & Fri.	1st & 3rd Sat.
3 to 5 Nakameguro	Sat.	Mon. & Thu.	2nd & 4th Tue.
1 Nakane	Fri.	Wed. & Sat.	1st & 3rd Mon.
2 Nakane	Fri.	Wed. & Sat.	2nd & 4th Mon.
1 & 2 Ohashi	Mon.	Tue. & Fri.	1st & 3rd Wed.
1 & 2 Ookayama	Fri.	Wed. & Sat.	2nd & 4th Mon.
1 & 2 Senzoku	Tue.	Wed. & Sat.	2nd & 4th Thu.
1 & 2 Shimomeguro	Thu.	Tue. & Fri.	2nd & 4th Sat.
3 to 5 Shimomeguro	Thu.	Tue. & Fri.	2nd & 4th Sat.
6 Shimomeguro	Tue.	Wed. & Sat.	1st & 3rd Thu.
1 & 2 Tairamachi	Fri.	Wed. & Sat.	2nd & 4th Mon.
1 to 3 Takaban	Wed.	Mon. & Thu.	2nd & 4th Fri.
1 to 5 Yakumo	Wed.	Mon. & Thu.	1st & 3rd Fri.
1 & 2 Yutenji	Sat.	Mon. & Thu.	2nd & 4th Tue.

### Example of bimonthly collection days for non-combustible wastes

For example, "1st & 3rd Mon." represents the first and third Monday of the month.



On any fifth day on the week in a month, there will be no collection for non-combustible wastes

# Large-sized waste (Fee and application required)

Generally, any items with at least one side 30cm or longer are treated as large-sized waste.

An application is required by phone or internet for disposal.

## Application to Meguro City Large-sized Waste Acceptance Center

※The pick-up date and prices will be notified at the time of application.

☎ **03-5715-0053**

Hours of operation: Monday through Saturday, 8:00am to 7:00pm

Phone calls can be made on national holidays except for during the year-end/New Year's holiday

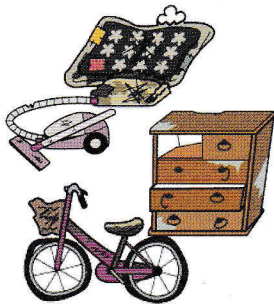


**Internet application** (available 24/7) Please use multilingual translation function.

※Meguro City website: “オンラインサービス” (Online service),

“粗大ごみ処理の手続き” (Procedures of oversized garbage processing)

※You can apply on the internet for limited items.



# Collection of small home appliances

## Small household electric appliances (nine types)

### Collecting subjects



Small home appliances collection box



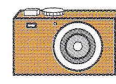
Mobile phones



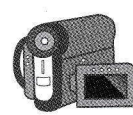
Handheld music players



Handheld gaming devices



Digital cameras



Portable video cameras



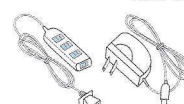
Portable car navigation devices



Electronic dictionaries



Handheld calculators



Cables (include AC adapters)

### Items Collection points

- 1) Komaba Juku Center (1-22-4 Komaba)
- 2) West Entrance of Meguro City Office Complex (2-19-15 Kamimeguro)
- 3) Main Building, Midorigaoka Community Center (2-14-23 Midorigaoka)
- 4) Meguro Waste Collection Office (2-13-19 Meguro Honcho)
- 5) Meguro Waste Collection Operation Office (4-1-2 Nakameguro) (Waste will be accepted at the office on the 2nd floor. Please notify when you arrive.)
- 6) Meguro Eco Plaza (Basement Floor, Dendo Fureai Kan (Dendo Juku Center) 1-25-26 Meguro)
- 7) Hokubu-chiku Service Office (9F Cross Air Tower, 1-5-1 Ohashi)
- 8) Chuo-chiku Service Office (Inside Shokuhan Building, 2-9-13 Chuo-cho)
- 9) Nanbu-chiku Service Office (Southwest side of Ishibumi Elementary School, 1-18-14 Himonya)
- 10) Seibu-chiku Service Office (1-28-10 Kakinokizaka)

### Do not place the following items in the collection box:

- Other small home appliances not listed above
- Any of an item's sides exceeding 30cm in length (such as item will not be able to pass through the recycling collection box entrance and will not be collected, even if the item is one of the nine listed above)
- Small home appliances from business entities

## Personal computers and other devices

### 1. Collection by the computer manufacturer

**Apply with the computer manufacturer for collection.**

- Products sold in 2003 onward with PC Recycle Mark can be collected and recycled for free.
- Contact PC3R Promotion Association for more details on homebuilt computers or when the manufacture is unknown, or no longer in service.

☎ 03-5282-7685

<https://www.pc3r.jp/>

(Information is available only in Japanese)



### 2. Collection via home collection service

**Apply with the city partner, ReNet Japan Recycle Co., Ltd. When computers are part of the collected items, the collection fee for one box will be free. Small home appliances such as printers can be included as well. For more details, please refer to their website (QR code on the right).**

#### ① Online Application

⇒Apply from the website of ReNet Japan Recycle Co., Ltd.

<https://www.renet.jp/>

#### ② When application through internet is not available...

⇒Please contact the ReNet customer center

☎ 0570-085-800



● **Meguro Waste Collection Office**  
(Waste Collection, Transportation, Recycling Collection, Waste Collection Sites, and Others)

☎ 03-3719-5345 2-13-19, Megurohoncho, Meguro-ku

● **Waste Management & Recycling Section (Planning and Promotion, and Others)**

☎ 03-5722-9572 6F Main Building, Meguro City Office Complex, 2-19-15, Kamimeguro, Meguro-ku

● **Meguro City website** Meguro City Search

Meguro City How to Separate and Dispose of Waste Items and Recyclables

Issued in March 2022

Issued by: Meguro City

Editor: Waste Management & Recycling Section, Environment & Waste Collection Department,

Meguro City Office, 2-19-15 Kamimeguro, Meguro-ku

☎ 03-5722-9572 FAX: 03-5722-9573



この印刷物は、印刷用の紙へリサイクルできます。



この冊子は、ベジタブルインキを使用しています。